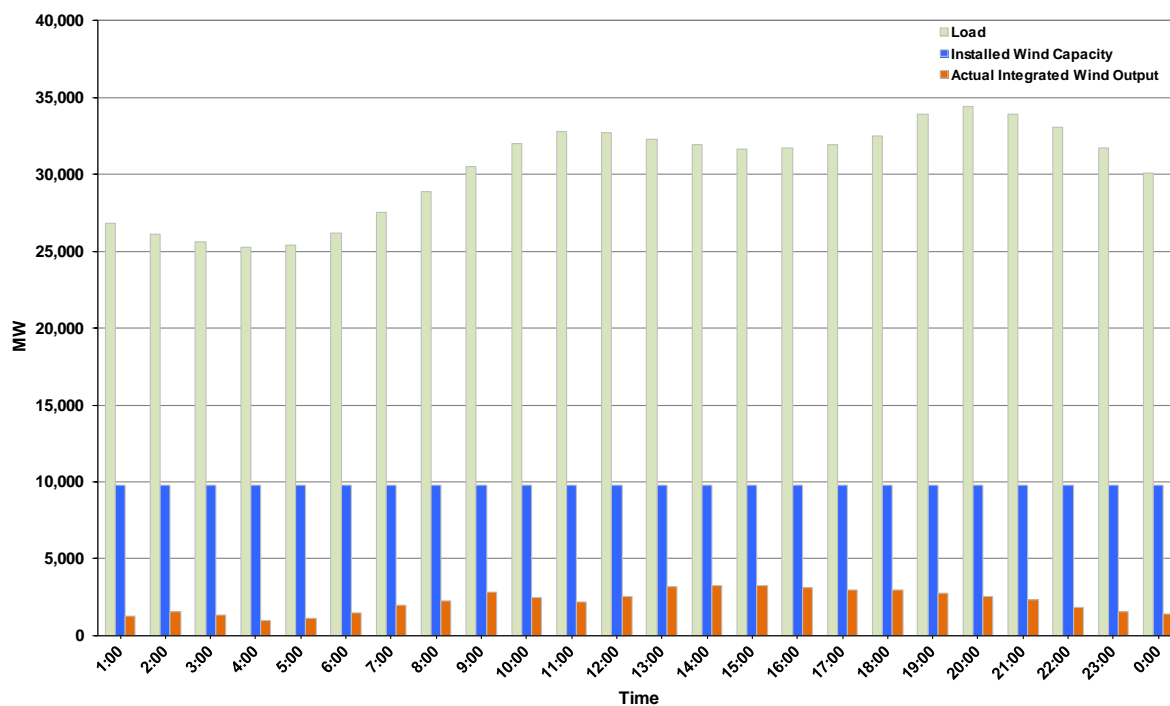




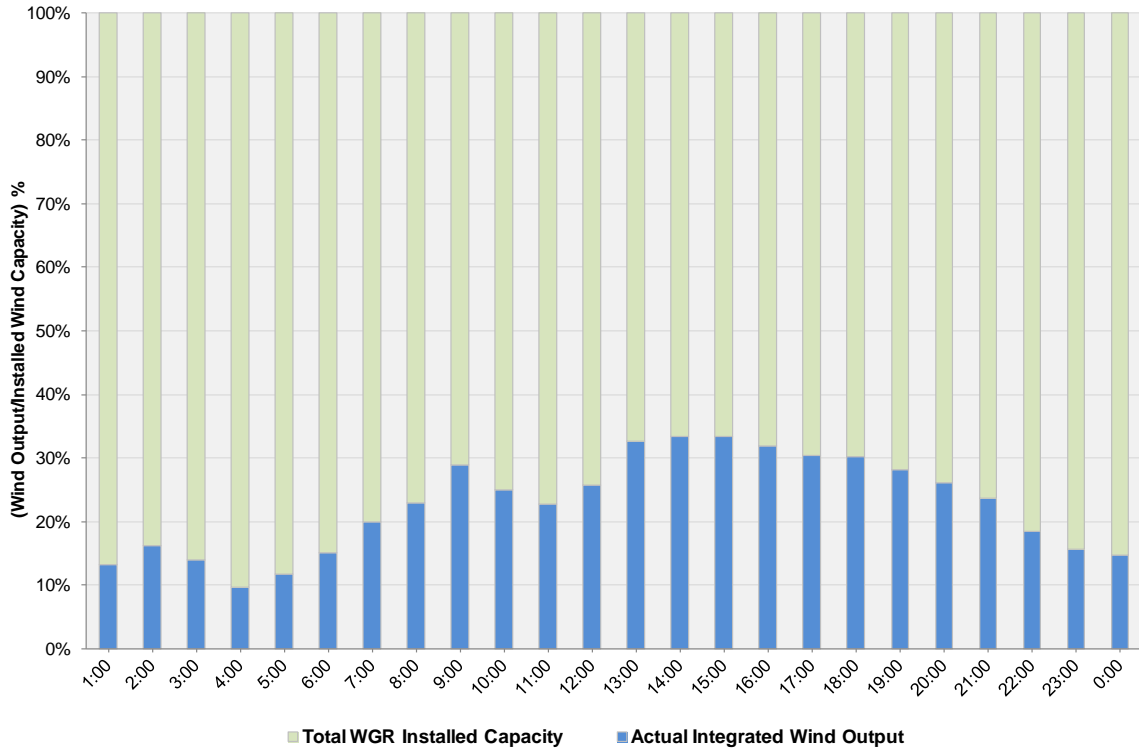
ERCOT Grid Operations Wind Integration Report: 02/18/12

Peak Load	34,386 MW
Load Peak Hour (HE)	20
Wind over Peak	2,564 MW
Wind Record 10/07/11	7,400 MW
Max Wind Value	3,419 MW
Wind Peak Time	12:36
Wind Integration %	10.61%

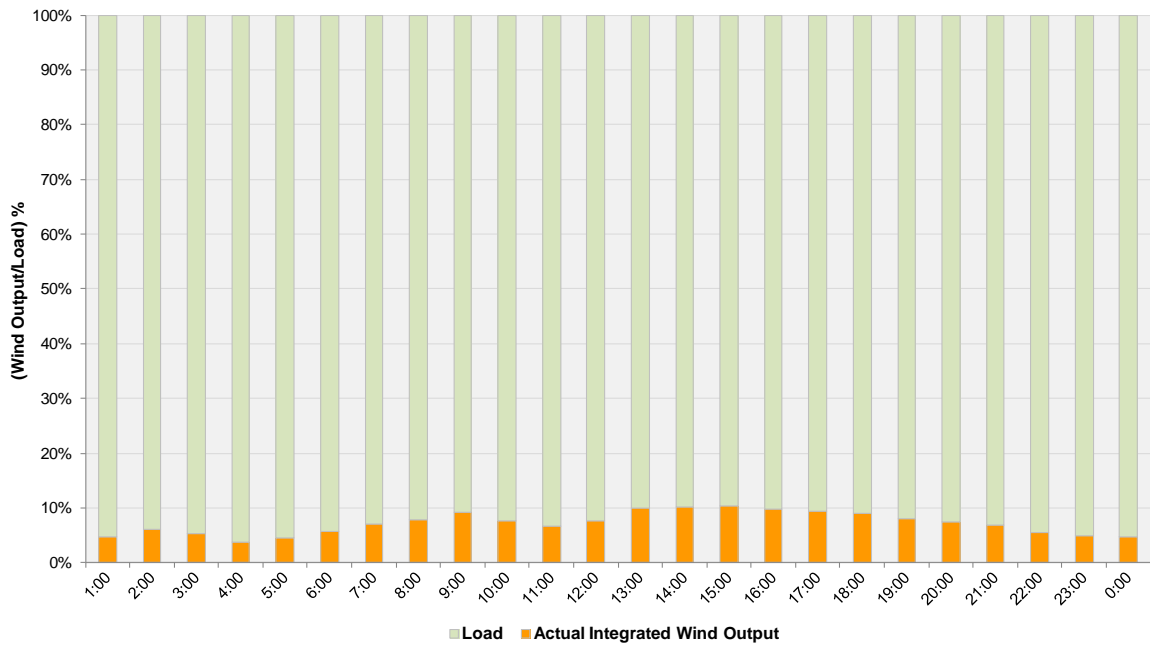
**Hourly Average Actual Load vs. Actual Wind Output
02-18-2012**



Actual Wind Output as a Percentage of the Total Installed Wind Capacity
02-18-2012



Actual Wind Output as a Percentage of the ERCOT Load
02-18-2012



ERCOT Load vs. Actual Wind Output 2/11/2012 - 2/18/2012

